

MMP-3 Lx Reagent

MMP-3

Matrix metalloproteinase 3 (MMP-3) is a proteolytic enzyme produced by synovial cells, fibroblasts, and macrophages in joints. It is believed to be involved in joint destruction as it decomposes proteoglycans, various collagens, laminin, fibronectin that constitute articular cartilage.¹⁾MMP-3 is overexpressed in the synovial tissue of patients with rheumatoid arthritis, and its blood level reflects rheumatoid activity.

Usefulness of Measurement of Serum MMP-3 2)

1. Early diagnosis We cite specificity as an adjunct to the diagnosis of RF Anti-CCP/Antibody
2. Assessment of activity Shows response specific to the activity of synovial inflammation and reflects in symptoms of rheumatoid arthritis well.
→ **For the follow up of rheumatoid arthritis!**
3. Prognostic prediction Serum MMP-3 levels correlate with radiographic progression at 6 to 12 months.
→ **For diagnostic prediction!**

INTENDED

Measurement of serum MMP-3 level

Principle of the measurement

Measure with a general-purpose automatic analyzer using latex immunoturbidimetric method.

Measurement range

10.0 - 1600 ng/ mL

Reference level 3)

Male : 36.9 -121 ng/ mL
Female : 17.3 - 59.7 ng/mL

1) Masao Shingu etc.: Rheumatism, 35, 15, 1995.

Major references

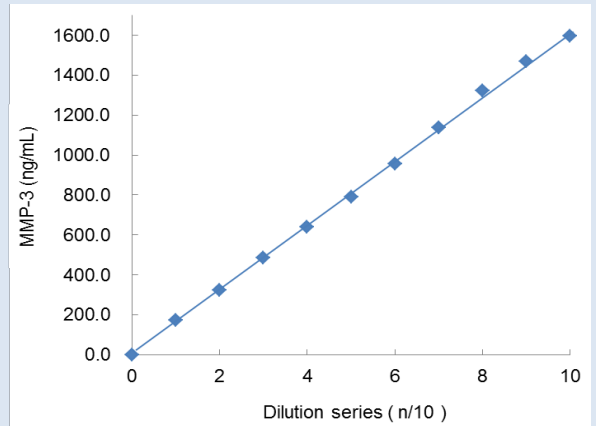
2) Shunichi Kumagai etc.: Clinical Pathology,-52: 10 2004-

3) Keiji Yokouchi etc. : New Drugs and Clinical Medicine, 50,215 (2001)

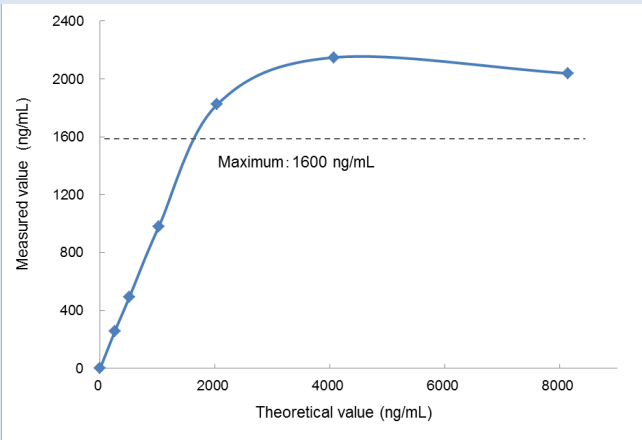
Within-run reproducibility

	Sample1	Sample2	Sample3
N	20	20	20
Mean (ng/mL)	41.9	102.8	302.5
S.D.	1.3	1.3	1.1
CV (%)	3.0	1.2	0.4
Max. (ng/mL)	44.5	104.6	304.5
Min. (ng/mL)	39.5	99.2	300.6
Range (ng/mL)	5.0	5.4	3.9

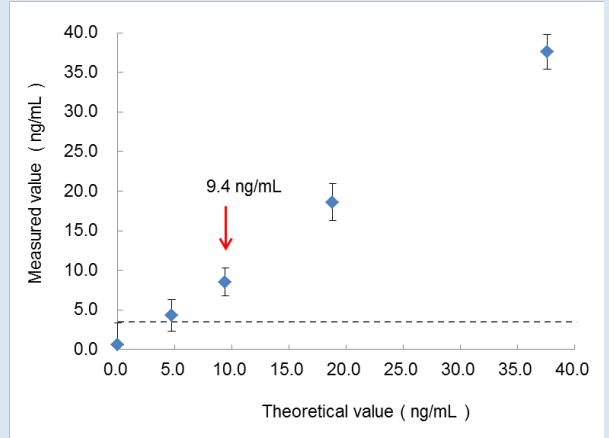
Dilution linearity



Pro-zone



Limit of sensitivity



Interfering substance

We don't accept an effect on measurement up to below density.

Hemolytic hemoglobin	500 mg/dL
Bilirubin C	20 mg/dL
Bilirubin F	20 mg/dL
Chyle	2,000 FTU
RF	1,000 IU/mL

Correlativity

