

# CystatinC Lx Reagent

## [Summary and explanation of the test]

Cystatin C is extracellular inhibitors of cysteine proteases and is produced in virtually all tissues and body fluids. Cystatin C is removed from the bloodstream by glomerular filtration in the kidneys because of a low molecular weight (13.4 kDa). It is expected that cystatin C in serum is more precise marker of kidney function as represented by the glomerular filtration rate (GFR) than creatinine or  $\beta$ 2-Microglobulin <sup>1)2)</sup>.

## <Characteristics>

This reagent can be evaluated when prepared in either a ratio of A:B = 3:1 or 4:1. This product is designed to be easily to match with features of measuring instruments for the user.

## [Measurable range]

0.12~45 mg/L cystatin C  
(0.08~45 mg/L = In case of 4:1)

## [Reference interval]

0.53-0.95 mg/L <sup>3)</sup>

## [Procedure]



Temperature: 37 degree C

This is the standard procedure. Instrument applications are available upon request.

## [Reference]

Roos JF, Doust J, Tett SE, Kirkpatrick CM (2007). Clin. Biochem, 40 (5-6), 383-391.

Dharnidharka VR, Kwon C, Stevens G (2002). Am. J. Kidney Dis, 40 (2), 221-226.

Kanai M (Eds ) (2010). Kanai's Manual of Clinical Laboratory Medicine, 1794 Tokyo: KANEHARA Press

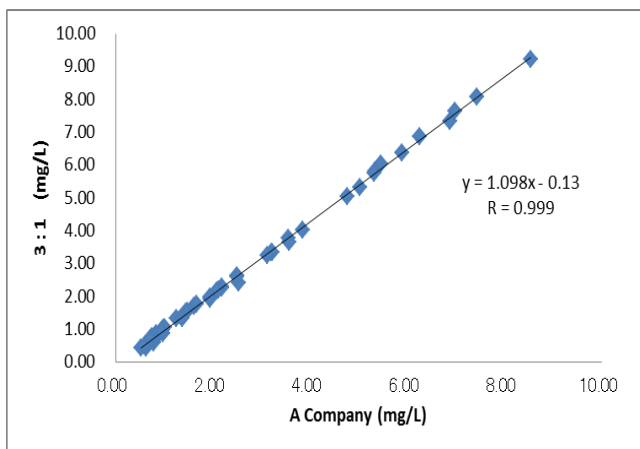
**Within-run reproducibility(3:1)**

	CTL-L	CTL-H	Serum1	Serum2
1	0.75	2.91	1.04	2.90
2	0.73	2.94	1.05	2.91
3	0.75	2.91	1.03	2.89
4	0.75	2.92	0.99	2.93
5	0.76	2.95	1.04	2.92
6	0.72	2.90	1.02	2.91
7	0.77	2.91	1.03	2.89
8	0.76	2.93	1.01	2.92
9	0.76	2.88	1.03	2.89
10	0.76	2.92	1.01	2.91
Mean (mg/L)	0.75	2.92	1.03	2.91
S.D.	0.02	0.02	0.02	0.01
CV (%)	2.03	0.69	1.74	0.49
Max (mg/L)	0.77	2.95	1.05	2.93
Min (mg/L)	0.72	2.88	0.99	2.89
Range (mg/L)	0.05	0.07	0.06	0.04

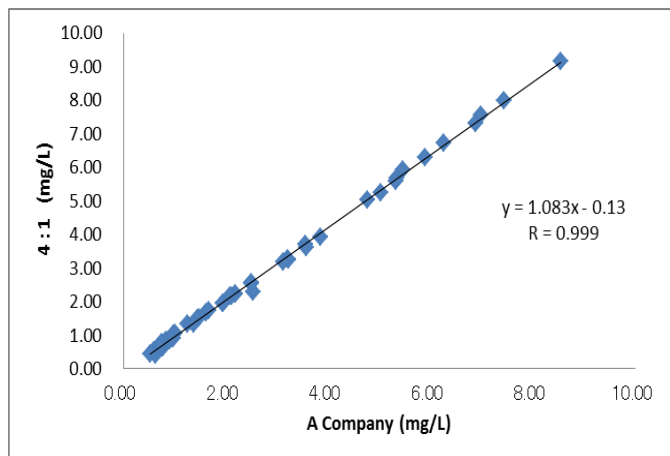
**Within-run reproducibility(4:1)**

	CTL-L	CTL-H	Serum1	Serum2
1	0.75	2.92	1.01	2.83
2	0.75	2.91	1.00	2.83
3	0.76	2.90	1.01	2.84
4	0.75	2.91	1.00	2.78
5	0.79	2.92	1.01	2.84
6	0.75	2.90	1.01	2.82
7	0.76	2.91	1.02	2.75
8	0.74	2.90	1.00	2.81
9	0.76	2.88	1.02	2.80
10	0.74	2.89	1.02	2.83
Mean (mg/L)	0.76	2.90	1.01	2.81
S.D.	0.01	0.01	0.01	0.03
CV (%)	1.90	0.44	0.81	1.03
Max (mg/L)	0.79	2.92	1.02	2.84
Min (mg/L)	0.74	2.88	1.00	2.75
Range (mg/L)	0.05	0.04	0.02	0.09

**Correlation ( 3 : 1 ver)**

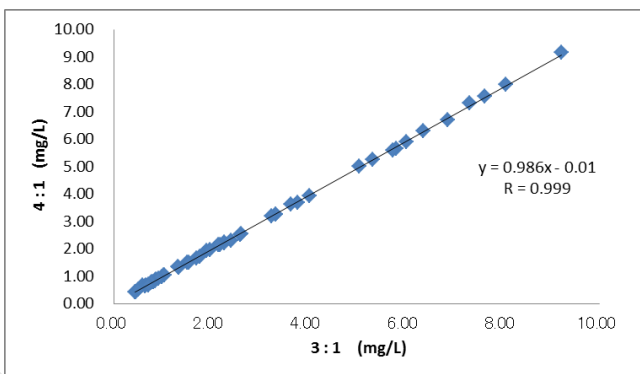


**Correlation ( 4 : 1 ver)**



**Correlation ( 3:1 / 4:1 )**

Confirmed the correlation by changing usage ratio.  
The same reagent and sample used.



# ACTIF

3-27-3 Kyodo, Setagaya-ku  
Tokyo 1560052 JAPAN  
TEL&FAX: +81-3-6413-1860  
E-Mail: [info@actifcorp.com](mailto:info@actifcorp.com)  
URL: [www.actifcorp.com](http://www.actifcorp.com)